

# The Cascadia Climate Adaptation Strategy

Collaborative planning for a rapidly changing landscape

Meade Krosby<sup>1</sup>, Gwen Bridge<sup>2</sup>

<sup>1</sup>Climate Impacts Group, University of Washington; NW Climate Adaptation Science Center

<sup>2</sup>Gwen Bridge Consulting, LTD



Cascadia PARTNER FORUM



**NORTHWEST**  
Climate Adaptation  
Science Center



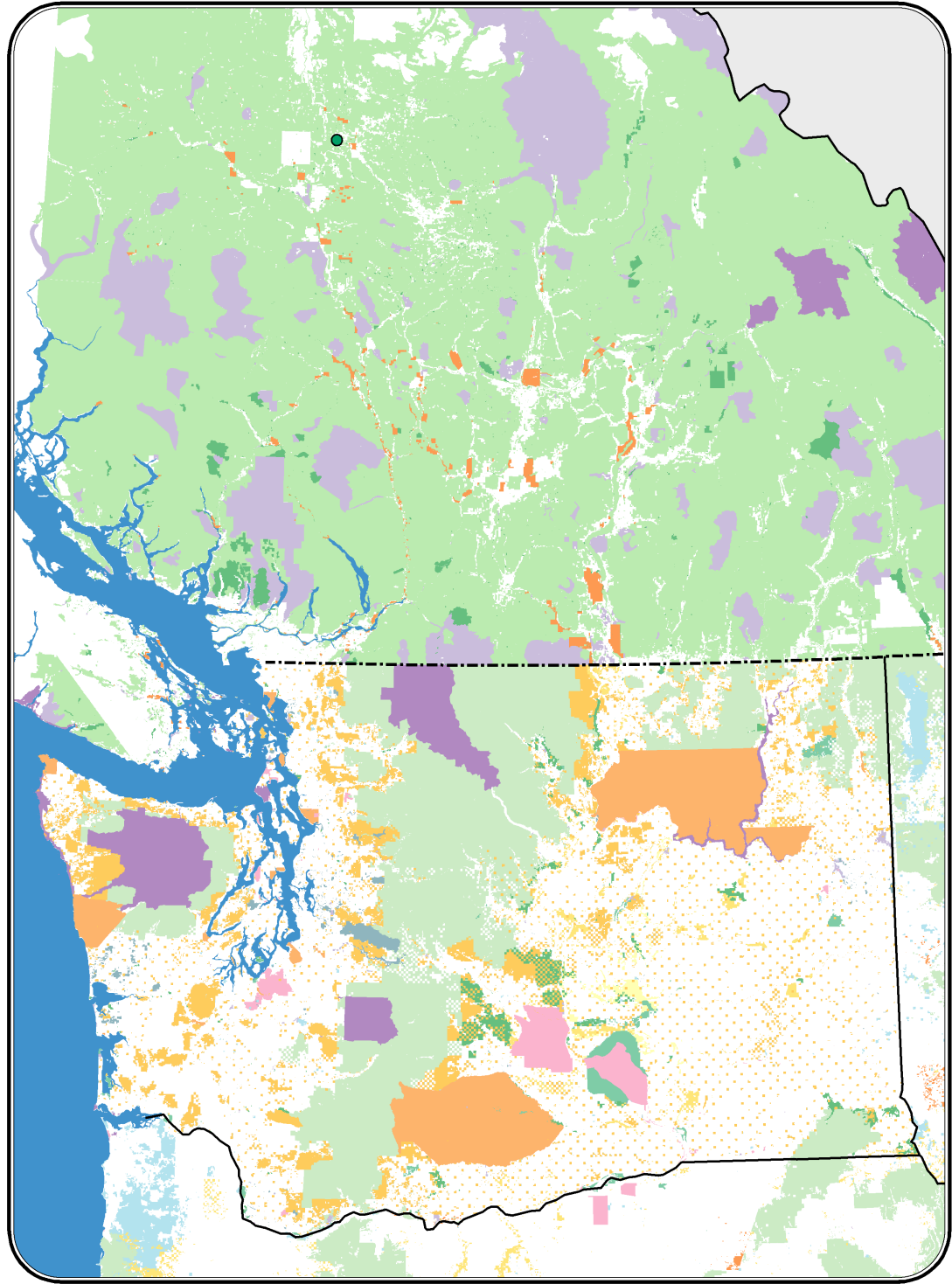
## Our Vision

The Cascadia Partner Forum envisions a region where our environment is resilient to the impacts of climate change, where residents with diverse life experiences and values—rural and urban communities, landowners, Native Tribes and First Nations, policy-makers, natural resource and economic development decision-makers—understand the dynamic nature of the Cascadia landscape and are working together to conserve connected networks of lands and waters, their diversity, natural functioning and ability to adapt, so that native fish and wildlife and people have flexible options far into the future.






# The Cascadia Region

- Core focus: the montane regions along the Cascades.
- Scope extends into the lowlands, both west (Puget Sound coast) and east (shrub steppe region, not including the core of the Columbia Basin).
- Attention given to connections to other areas.





**Canada / BC**

-  Unceded Land
-  First Nations
-  National Parks
-  BC Provincial Parks
-  Other Provincial Protected Areas

**USA / Washington**

-  Tribal Reservations
-  US Forest Service
-  National Park Service
-  US Bureau of Land Management
-  US Bureau of Reclamation
-  US Dept. of Defense or US Dept. of Energy
-  US Fish and Wildlife Service
-  Washington State Department of Fish and Wildlife
-  Washington State Parks and Recreation Commission
-  Other State Agencies
-  City or County Government
-  Washington Dept. of Natural Resources

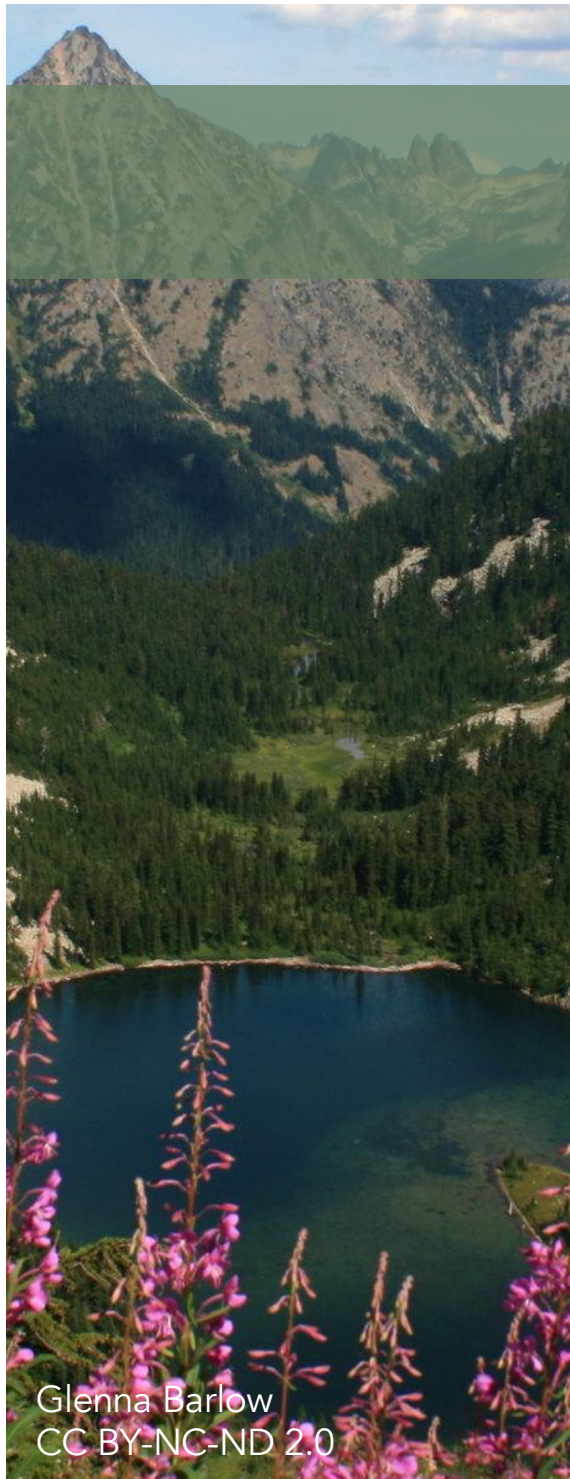
# Cascadia Climate Adaptation Strategy



# The Climate Adaptation Strategy Process



# The Climate Adaptation Strategy Process



# Co-Developing the Climate Adaptation Strategy

Land use decision-makers have the **capacity** to understand and plan for climate resilience



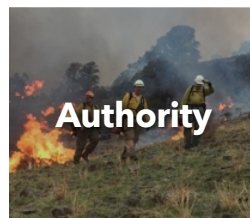
Land use decision-makers are **coordinated** across boundaries to support climate resilience



Land use decision-makers are **motivated** to support climate resilience



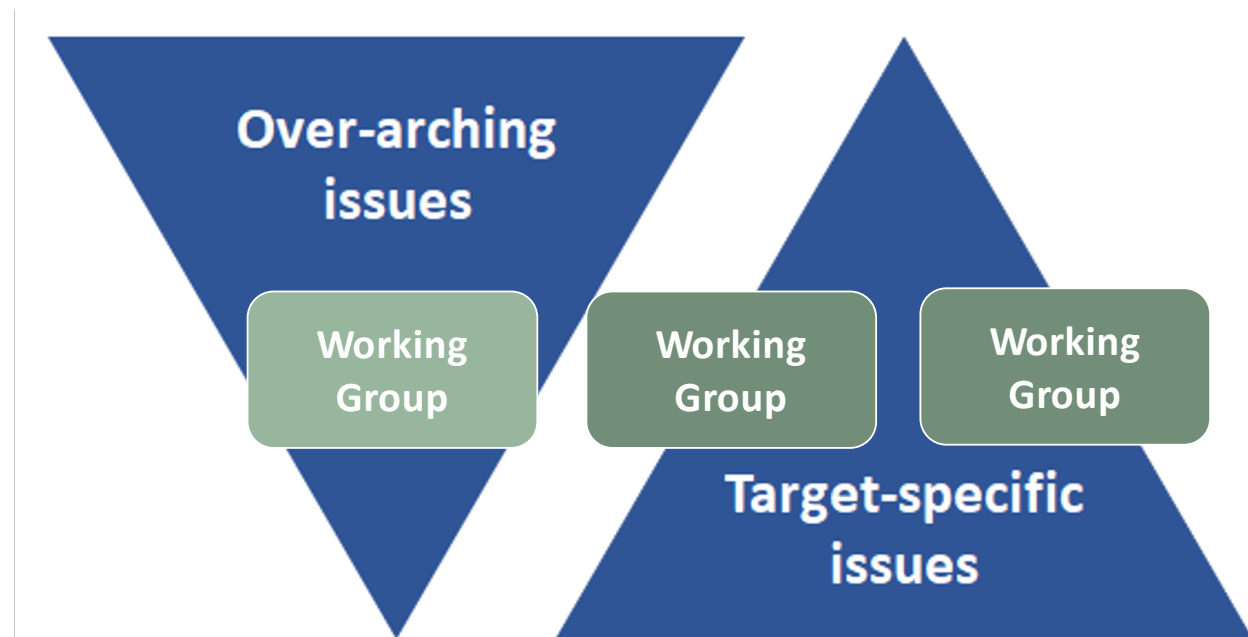
Land use decision-makers have the **authority** to implement decisions that support climate resilience



Land use decision-makers have sufficient **funding** to support climate resilience



## Phase I Pilot





# Conservation Targets and Working Groups

Cascadia Partner Forum: Strategy Core Team		
Overarching Issues	Target-Specific Issue	Target-Specific Issue
WHOLE LANDSCAPE	CARNIVORES	SALMONIDS?
Capacity Coordination Motivation Authority Funding	Coarse-Filter: Coastal Forest, Interior Forest, Alpine Biomes	Coarse-Filter: Freshwater aquatic and Riparian Biomes?
	Fine-Filter: Grizzly Bear, Lynx, Fisher, Wolverine, Cascades Red Fox	Fine-Filter: Pink, Coho, Chinook, Steelhead, Bull Trout?
UW Climate Impacts Group		

## Process Overview

- Pilot Phase Strategy complete by end of November 2021
- Working groups will have 5 meetings + a final briefing
  - One meeting per month + 2-4 hrs individual work per month
  - Meetings are arranged together (all Working Groups), but core work on actions is in breakout sessions
  - Each Working Group has a lead from the Core Team
- Balance ownership and efficiency



# The Climate Adaptation Strategy – Roles

## Strategy Core Team

1. Set vision
2. Define scope
3. Establish goals
4. Set conservation targets based on stakeholder engagement
5. **Create, support, and manage working groups**
6. **Synthesis of working group recommended actions into *coordinated* adaptation strategy**

## Strategy Working Groups


1. Identify objectives to achieve goals
2. Identify problem areas within the Theory of Change
3. Identify actions that address the problem areas, under the 5 pillars
4. Identify metrics that quantify goals & action effectiveness
5. Monitor progress towards goals

## CPF – Leadership Council

1. Endorse vision
2. Endorse scope
3. Endorse goals and objectives
4. Provides link to overall Cascadia Partner Forum stakeholders.
5. Communicates and engages external entities to increase awareness of our work
6. Promote support and commitment to implement the adaptation strategy from *high-level* decision-makers from stakeholder entities

## CPF – Stakeholders

1. Support the CPF
2. Embrace the adaptation strategy and commit to implementation
3. Incorporate the adaptation plan into internal planning process
4. Empower staff to coordinate planning externally with adjacent land managers



# Cascadia Indigenous Engagement Strategy

## Principles

# PHILOSOPHY

- Philosophy: First Nations and Tribes hold important information about climate change, Tribes have interest in climate change However Tribes have the political, sovereign, and legal authorities and the vision, to move this plan from concept to action

# CASCADIA PARTNER FORUM'S SUPPORT STATEMENT:

## GUIDING PRINCIPLE

This process proceeds with a deep respect for Indigenous knowledge, cultures, values and the practices of tribes and First Nations. In British Columbia, the UN Declaration on the Rights of Indigenous Peoples (UNDRIP) is a framework for reconciliation and will guide the inclusion and recognition of Indigenous peoples and their perspectives in achieving the Forum's vision. In Washington, we recognize tribes' rights to exercise their sovereign authorities related to lands and natural resources within their traditional, ceded, and usual and accustomed territories, in accordance with state and federal laws.

(A few specifics in the Cascadia Partner Forum's Support Statement vary between the Province of British Columbia and the State of Washington, in recognition and acknowledgement of the two jurisdictions' different legal contexts.)

# OVERARCHING PRINCIPLES FOR ENGAGING WITH TRIBES AND FIRST NATIONS

- Responsibility: We are responsible for the content and character of our relationships, we meet our commitments
- Reciprocity: we will ensure that we are always bringing value to First Nations
- Relevance: our work will be considered in relation to Tribal priorities as well as our own. We will work on building collective relevant
- Relationality : we commit long term to the development of mutually beneficial relationship
- Funding: may be required to engage with the Tribes and First Nations

# GOALS AND OBJECTIVES

- **Goal:** to have a co-developed Cascadia Climate change adaptation strategy
- **Objective 1.** To reflect indigenous content relevant to Cascadia in the Climate Adaptation Strategy
- **Objective 2.** To secure participation in the development of the Cascadia Climate Adaptation Strategy by Tribes and First Nations in the region



FURTHER  
PRINCIPLES  
FOR  
ENGAGING  
WITH  
TRIBES  
AND FIRST  
NATIONS

- Tribal and First Nations peoples have within their communities the information necessary to effectively inform climate change adaptation
- Tribal and First Nations communities may have capacity challenges that we will endeavor to address when we make requests
- Information from Tribal and First Nations peoples will likely contain insights that inform the process of co-development, the interpretation of climate impacts and mitigation and adaptation strategies

FURTHER  
PRINCIPLES  
FOR  
ENGAGING  
WITH  
TRIBES  
AND FIRST  
NATIONS,  
CONT.

- Tribal and First Nations may have differing priorities to be analyzed which may need to be incorporated in a future working group
- Holistic thinking and understanding is complex and we will do our best to understand it
- Indigenous climate knowledge may be contained in indigenous law and not able to be effectively integrated with science
- We will continue to build our understanding of our partners through learning and communicating, could include courses, training, meetings, workshops etc.
- The work we do today will create improved relationships for the long term



## Join Us!

Do you or your Tribe or org want to be a partner in co-developing the Cascadia Climate Adaptation Strategy?

Do you have recommendations of people to invite to participate in the three Working Groups?

Contact Meade Krosby: [mkrosby@uw.edu](mailto:mkrosby@uw.edu)

A scenic view of a mountain range with evergreen trees in the foreground and a clear blue sky. The mountains are layered, creating a sense of depth. The sky is a clear, light blue.

# QUESTIONS?

Meade Krosby: [mkrosby@uw.edu](mailto:mkrosby@uw.edu)  
Gwen Bridge: [gwen@gwenbridge.com](mailto:gwen@gwenbridge.com)